



Design Pop-Up

5/6/7 Dec 2020

10am-5pm

**Aberdeen Art Gallery
Schoolhill // AB10 1FQ**

**Support and shop
local this Christmas**

Level 2

Small Stories by Gabrielle Reith

Mags Gray Ceramics

Megan Falconer

Mimi Hammill

Level 1

Kevin Andrew Morris

Leanh La Jewellery

Ground Floor - Sculpture Court

Anne Marquiss Jeweller

Hackley

Helen Ruth Scarves

Paper Houses Design

Ground Floor - Cowdray Hall

Aubin Jewellery

Bramble Graphics

Fernweh

Rho Rho Illustration

Frieda Strachan

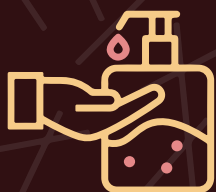




WEAR A MASK



KEEP YOUR DISTANCE



SANITISE YOUR HANDS



FOLLOW THE SIGNS



WE'RE HERE TO HELP